

Science CRCT Study Guide part 2 (doddlifecrct)

Name: _____

Date: _____

1. Which of these is **not** an instinctive behavior?

- A. a bird building a nest
- B. a turtle burying its eggs
- C. a bear hibernating in winter
- D. a horse pulling a plow

This online assessment item contains material that has been released to the public by the Massachusetts Department of Education.

2. Which cellular structure is found in plants, but not in animals?

- A. mitochondria
 - B. nucleus
 - C. chloroplast
 - D. endoplasmic reticulum
-

3. Would it be good for your health to kill all of the bacteria in your body?

- A. Yes. Most bacteria in your body are harmful. Killing all of the bacteria would get rid of these bacteria.
 - B. No. Many bacteria in your body are beneficial. These beneficial bacteria help your body perform physiological functions, such as digestion.
 - C. Yes. Getting rid of all bacteria in the body would prevent most diseases. This is why doctors use antibiotics.
 - D. No. The harmful bacteria in your body are important for stimulating the immune system.
-

4. Which structure is found in a plant cell but not in an animal cell?

- A. nucleus
 - B. cell membrane
 - C. cell wall
 - D. chromosomes
-

5. Organisms with a body covering of feathers are classified as

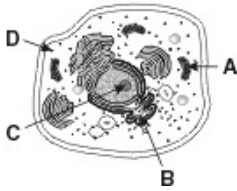
- A. birds.
 - B. fish.
 - C. insects.
 - D. mammals.
-

6. Several scientists observe an animal with hair and wings. This animal is a

- A. bat.
 - B. bird.
 - C. butterfly.
 - D. flying squirrel.
-

7.

Use the diagram below to answer this question.



Which arrow points to a mitochondrion?

- A. arrow A
 - B. arrow B
 - C. arrow C
 - D. arrow D
-

8. A biologist discovers a new multicellular organism. The biologist is not sure if it is a plant or an animal. She decides to look at the cells under a microscope. Which structure would **best** indicate that the organism is a plant?

- A. chloroplast
 - B. Golgi body
 - C. ribosome
 - D. lysosome
-

9. All vertebrate animals have

- A. scales.
 - B. warm blood.
 - C. backbones.
 - D. hair.
-

10. Which animals are cold-blooded, live part of their lives in water and part on land, and go through metamorphosis?

- A. reptiles
 - B. amphibians
 - C. birds
 - D. mammals
-

11. Which structures differentiate plants from other organisms?

- A. cell membranes
 - B. cell walls
 - C. nuclei
 - D. veins
-

12. Which can bacteria do?

- A. spoil food
 - B. heal cuts
 - C. purify water
 - D. cause cancer
-

13. One benefit of bacteria is that they can be used to

- A. strengthen some wood products.
 - B. produce plastic from petroleum.
 - C. produce certain kinds of foods.
 - D. keep our clothes from wearing out.
-

14.

Which of these are characteristics of inherited traits?

- A. the ability to speak in front of a crowd
 - B. having green eyes and brown hair
 - C. mastering multiplication tables
 - D. becoming an extrovert
-

15.

Which of these is the correct definition for a gene?

- A. a single cell organism
 - B. a string of Mitochondrial DNA
 - C. non-hereditary traits such as learned behaviors
 - D. a hereditary unit consisting of a sequence of DNA
-

16. **Some birds fly south for the winter. Birds know when and where to fly because of —**

- A. camouflage
- B. mimicry
- C. instinct
- D. hibernation

*Permission has been granted for reproduction by the Virginia Department of Education
© Virginia Department of Education*

17. **Redwood trees can grow to be very tall. They can grow so tall because they are —**

- A. vascular
- B. deciduous
- C. nonvascular
- D. flowering

*Permission has been granted for reproduction by the Virginia Department of Education
© Virginia Department of Education*

18. Which of these is *not* a plant?





housefly



Streptococcus



octopus



moss



flower



Paramecium



Spirillum



bird



mushroom



Amoeba



tree







bread mold

19. Which is true for the flower, but **not** for the moss?

- A. classified as a plant
- B. composed of cells
- C. produces seeds
- D. makes its own food

20. Which cell is a plant cell?

- A. 
- B. 
- C. 
- D. 

Answer Key

1. D) a horse pulling a plow
2. C) chloroplast
3. B) No. Many bacteria in your body are beneficial. These beneficial bacteria help your body perform physiological functions, such as digestion.
4. C) cell wall
5. A) birds.
6. A) bat.
7. A) arrow A
8. A) chloroplast
9. C) backbones.
10. B) amphibians
11. B) cell walls
12. A) spoil food
13. C) produce certain kinds of foods.
14. B) having green eyes and brown hair
15. D) a hereditary unit consisting of a sequence of DNA
16. C) instinct
17. A) vascular



18. B) **G.**

19. C) produces seeds

20. A)

